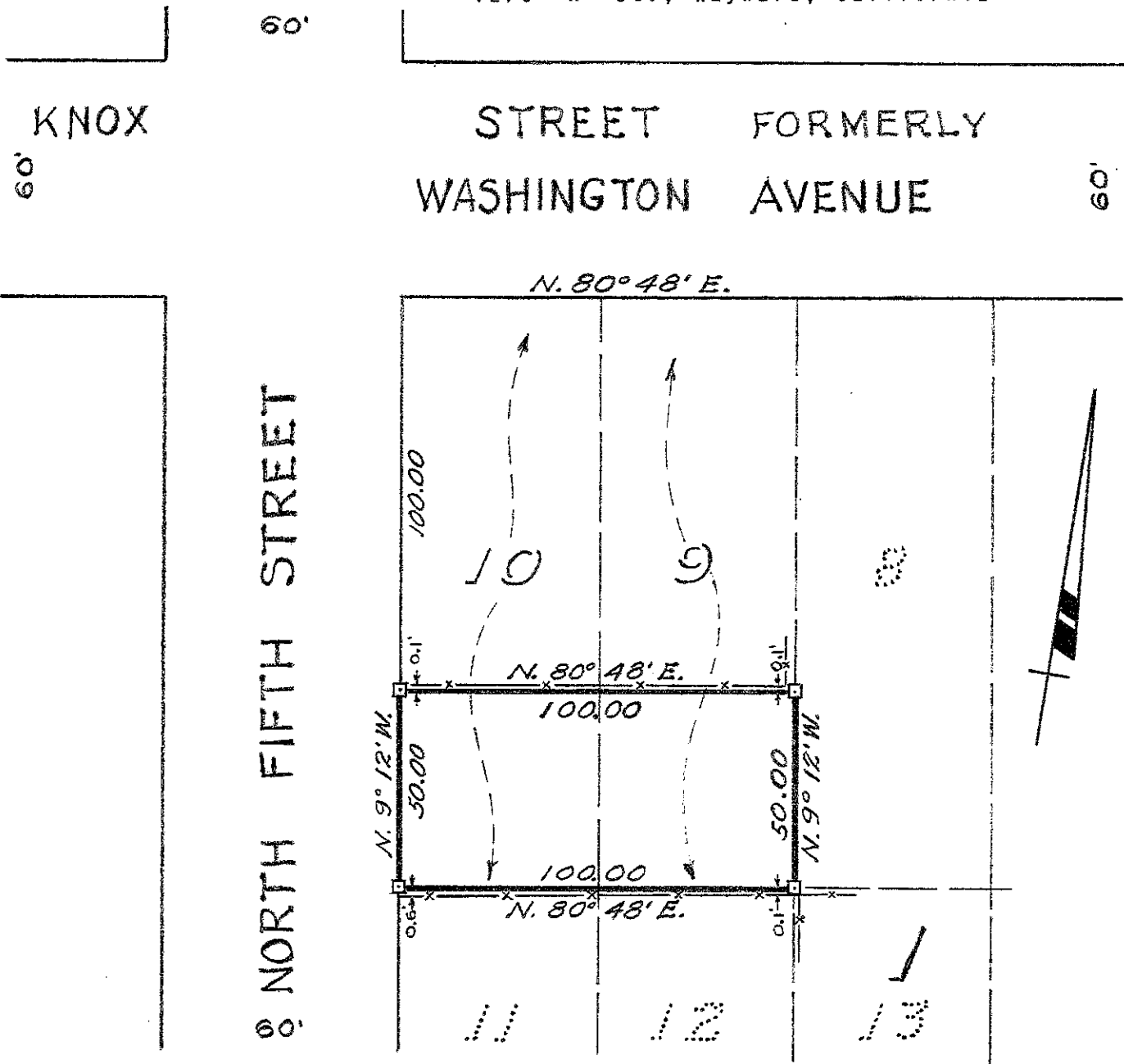



SURVEY FOR MISS LORRAINE BOLLINGER
 IN EDEN TOWNSHIP, ALAMEDA COUNTY, CALIFORNIA
 OF A PORTION OF LOTS 9 AND 10, BLOCK 1, "KNOX TRACT PROPERTIES OF
 MILO AND WILLIAM KNOX ADJACENT TO THE TOWN OF HAYWARDS", ETC.,
 FILED JUNE 18, 1892 IN BOOK 17 OF MAPS, AT PAGE 87 IN THE OFFICE
 OF THE COUNTY RECORDER OF ALAMEDA COUNTY.

Scale: 1 Inch = 40 Feet
 Surveyed, April, 1953

JOHN A. MANCINI, R.E. No. 1592
 1279 "A" St., Hayward, California



REFER:
 F.B. 54, p. 32
 Map T-49

LEGEND:
 Stakes 
 Fences 