




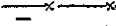
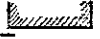
SURVEY FOR MR. A. J. ERNST
 IN THE CITY OF HAYWARD, ALAMEDA COUNTY, CALIFORNIA
 OF A PORTION OF LOT 23, AS SHOWN ON THE "MAP OF
 HAYWARD MANOR", FILED SEPTEMBER 19, 1930 IN
 BOOK 19 OF MAPS, AT PAGES 97 AND 98, IN THE
 OFFICE OF THE COUNTY RECORDER OF ALAMEDA COUNTY.

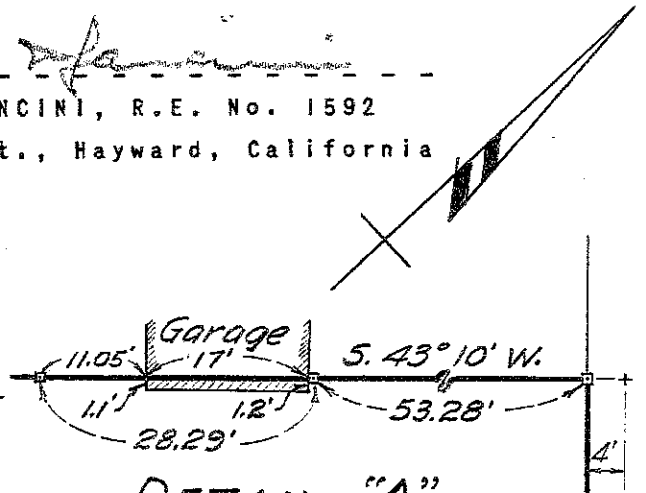
REFER:
 F.B. 53, p. 25
 Map T-14

Scale: 1 Inch = 40 Feet
 Surveyed: April, 1953

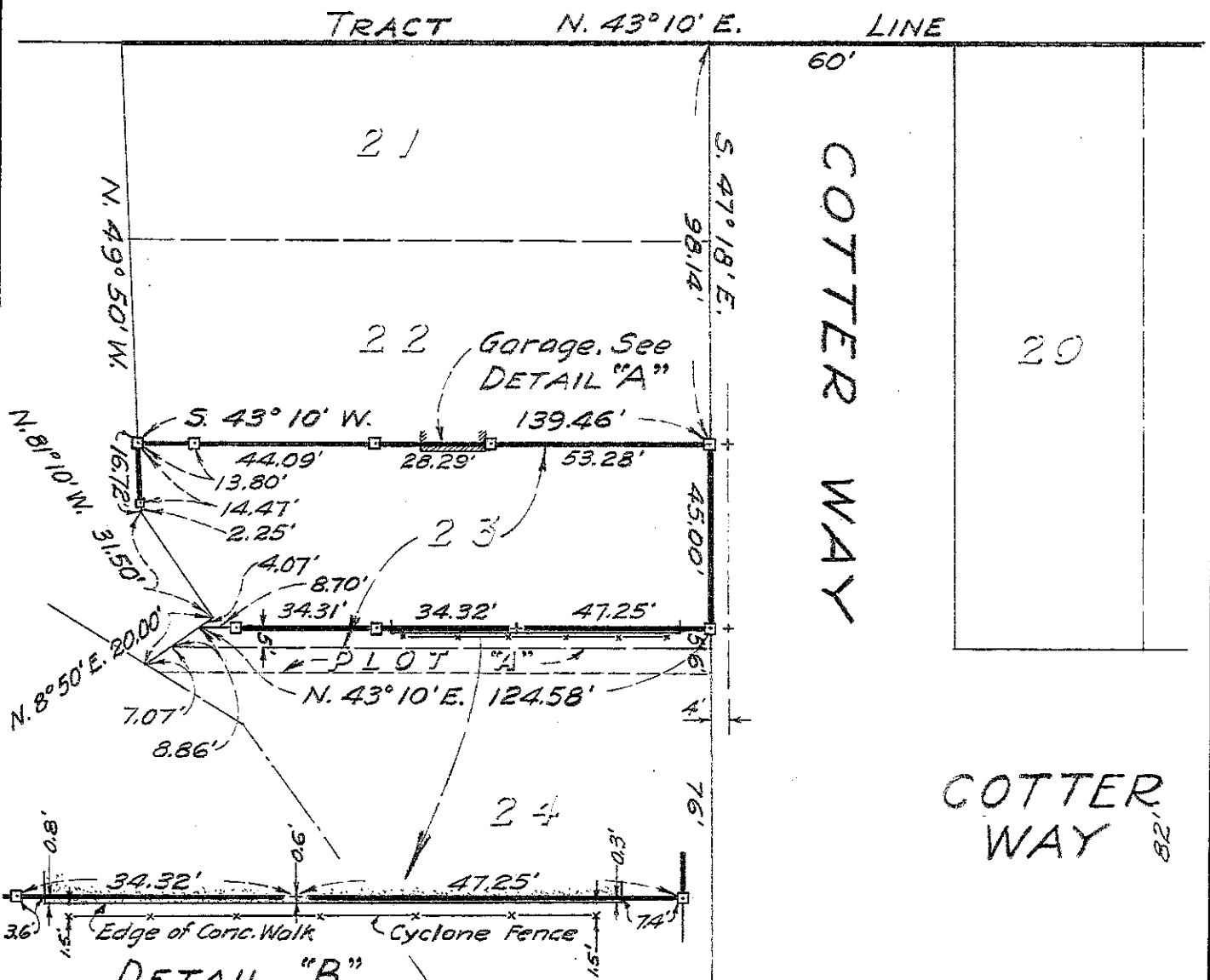
John A. Mancini
 JOHN A. MANCINI, R.E. No. 1592
 1279 "A" St., Hayward, California

LEGEND:

- Surveyed Line 
- Stakes 
- Cross on Concrete Walk 
- Fence 
- Garage 



DETAIL "A"
 Scale: 1" = 20'



DETAIL "B"
 Scale: 1" = 20'