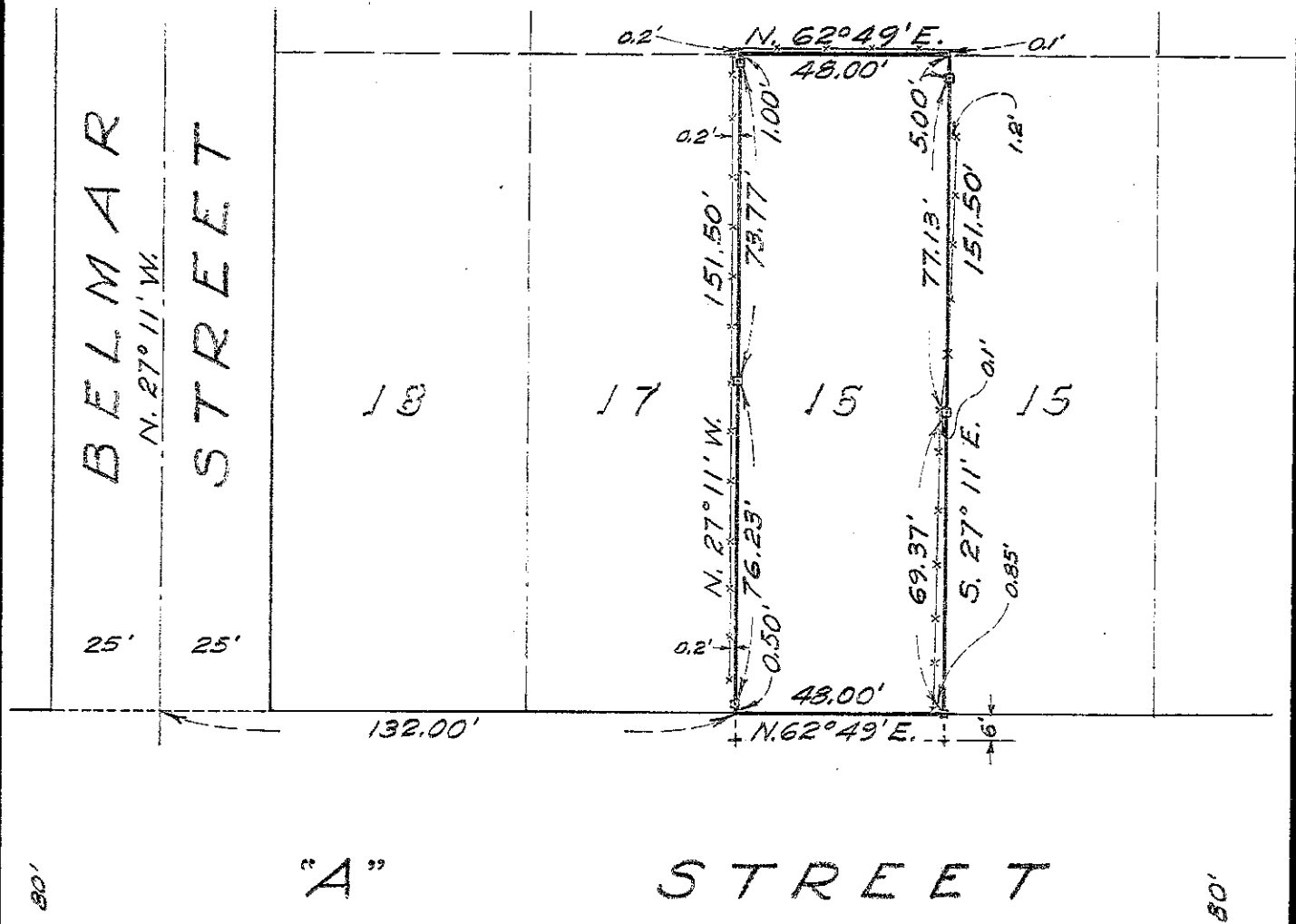
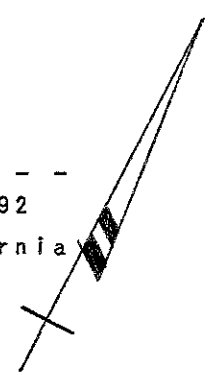


SURVEY FOR MR. ANTHONY MATTOS  
 IN THE CITY OF HAYWARD, ALAMEDA COUNTY, CALIFORNIA  
 OF LOT 16 AS SHOWN ON THAT CERTAIN MAP ENTITLED,  
 "RESUBDIVISION OF BLOCK "D" MEEK ESTATE ORCHARDS,  
 HAYWARD, EDEN TP., ALAMEDA CO., CALIF., SURVEYED  
 OCTOBER 1920", FILED NOVEMBER 6, 1920 IN BOOK 6  
 OF MAPS, AT PAGE 45, IN THE OFFICE OF THE COUNTY  
 RECORDER OF ALAMEDA COUNTY.

REFER:  
 F.B. 54, p. 29  
 F.B. 54, p. 2  
 F.B. 7, p. 38  
 Map 4-12

Scale: 1 Inch = 40 Feet  
 Surveyed: March, 1953

*John A. Mancini*  
 JOHN A. MANCINI, R.E. No. 1592  
 1279 "A" St., Hayward, California



LEGEND:

- Surveyed Line
- Stakes
- Fences
- Cross on Sidewalk

T.A.L.

SURVEY NO. 3384