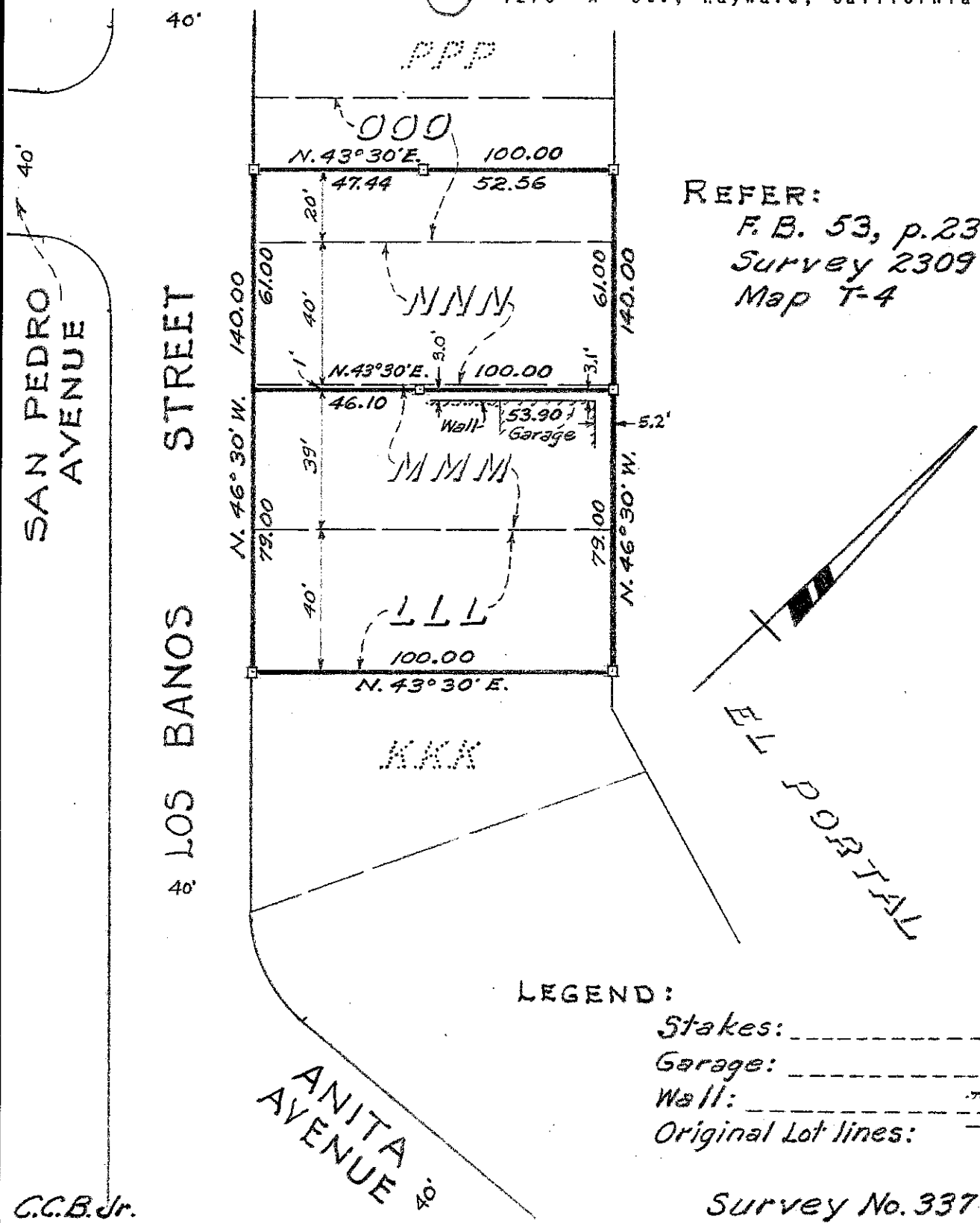


SURVEY FOR MR. A. R. ZACARIAS  
 IN EDEN TOWNSHIP, ALAMEDA COUNTY, CALIFORNIA  
 OF LOTS LLL, MMM, NNN AND A PORTION OF LOT 000, AS SAID LOTS ARE SHOWN  
 ON THE MAP ENTITLED, ("RESUBDIVISION OF LOTS 74 TO 78 INCL., 81 TO  
 84 INCL., 103 TO 106 INCL., 108 TO 113 INCL., 115 TO 118 INCL., 123  
 TO 126 INCL., 128 TO 132 INCL., 161 TO 167 INCL., 169 TO 176 INCL.,  
 238 TO 250 INCL., AND PORTION OF 251, EL PORTAL", ETC., FILED MAY  
 16, 1927 IN BOOK 12 OF MAPS, AT PAGE 73 IN THE OFFICE OF THE COUNTY  
 RECORDER OF ALAMEDA COUNTY.

Scale: 1 Inch = 40 Feet  
 Surveyed, March 1953

*John A. Mancini*  
 JOHN A. MANCINI, R.E. No. 1592  
 1279 "A" St., Hayward, California



REFER:  
 F. B. 53, p. 23  
 Survey 2309  
 Map T-4

LEGEND:  
 Stakes:   
 Garage:   
 Wall:   
 Original Lot lines:

C.C.B. Jr.

Survey No. 3377