

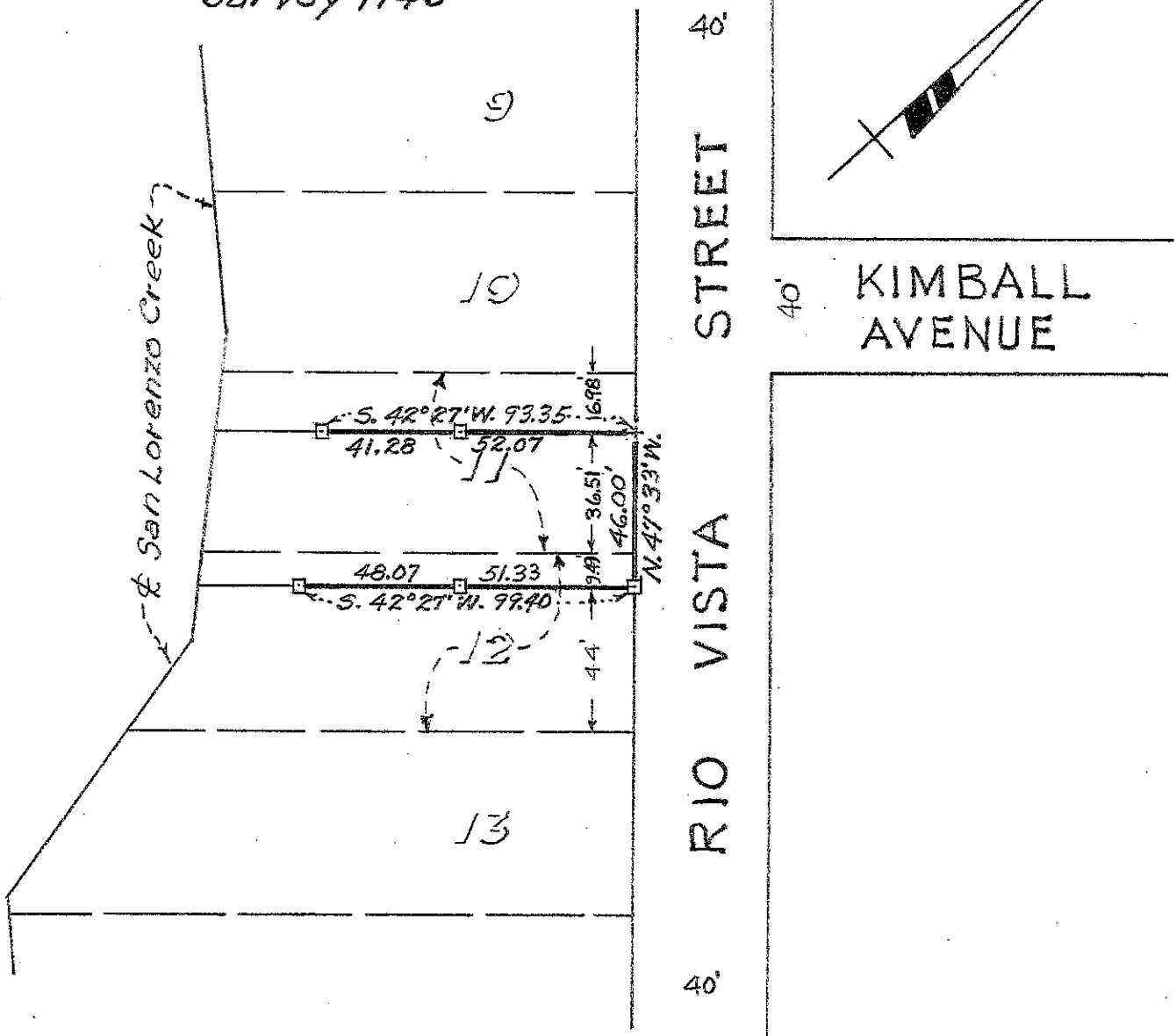
Survey for MR. MANUEL ZACARIAS  
 in Eden Township, Alameda County, California.  
 of a portion of Lots 11 and 12, "OAK VIEW TRACT, etc.,  
 filed October 14, 1907 in Book 23 of Maps, at page 45,  
 in the office of the County Recorder of Alameda  
 County.

SCALE: 1 INCH = 50 FEET  
 Surveyed, January, 1953

REFER:

F.B. 54, p. 23  
 Map. 27-2-52  
 Survey 1746

*John A. Mansini*  
 John A. Mansini, R.E. No. 1592  
 1279 "A" St., Hayward, California.



LEGEND:

Stakes  □  
 Cross  +  
 Surveyed line  —