

Survey for MRS. E. C. WILLIS
 in the City of Hayward, Alameda County, California.
 of Lot 2, "MAP OF THE BOBB TRACT", etc.,

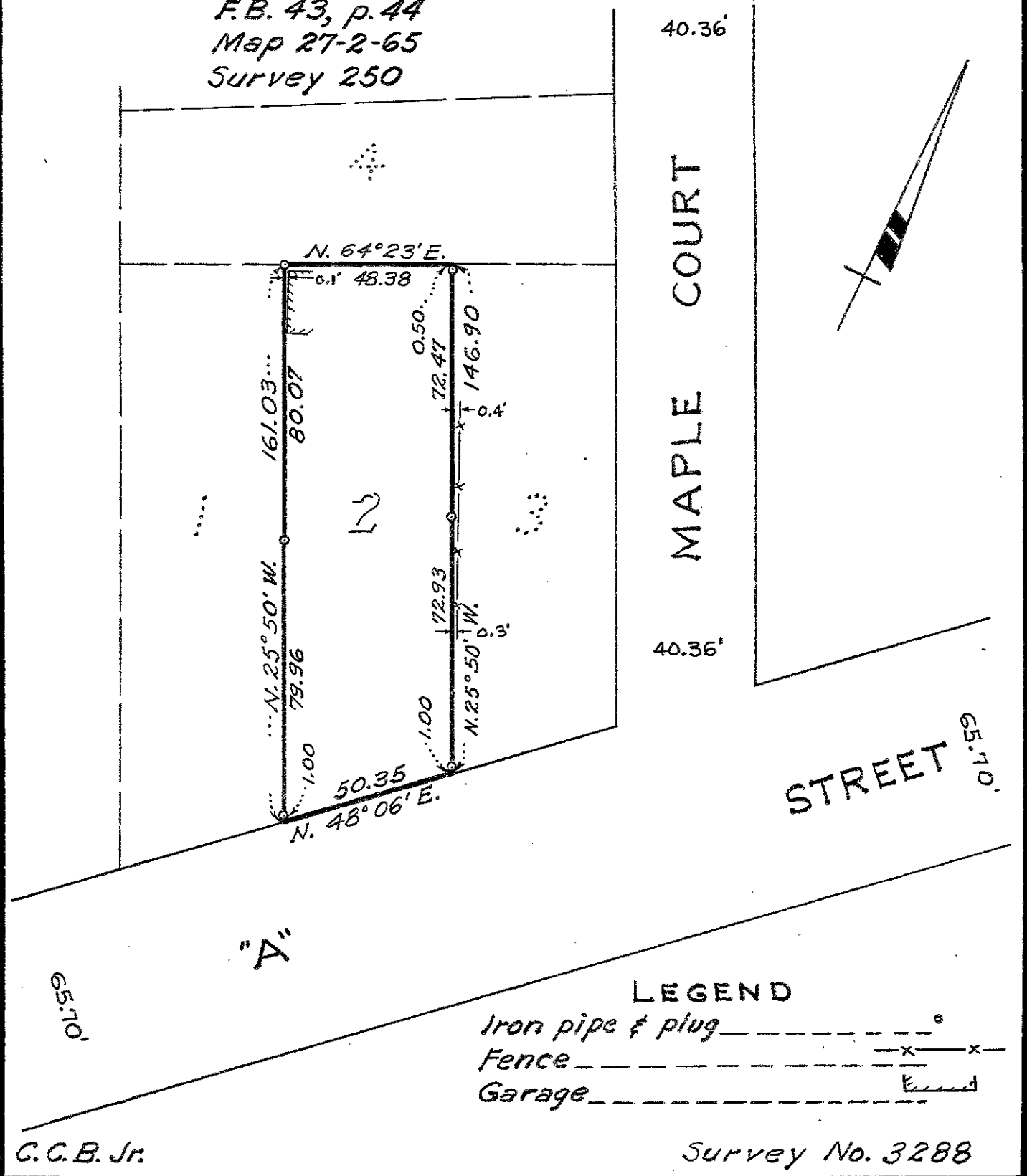
filed September 23, 1907 in Book 23 of Maps, at page
 33 in the office of the County Recorder of Alameda
 County.

SCALE: 1 INCH = 40 FEET
 Surveyed, December, 1952

John A. Mancini
 John A. Mancini, R.E. No. 1592
 1279 "A" St., Hayward, California

REFER:

F.B. 43, p. 44
 Map 27-2-65
 Survey 250



C. C. B. Jr.

Survey No. 3288