

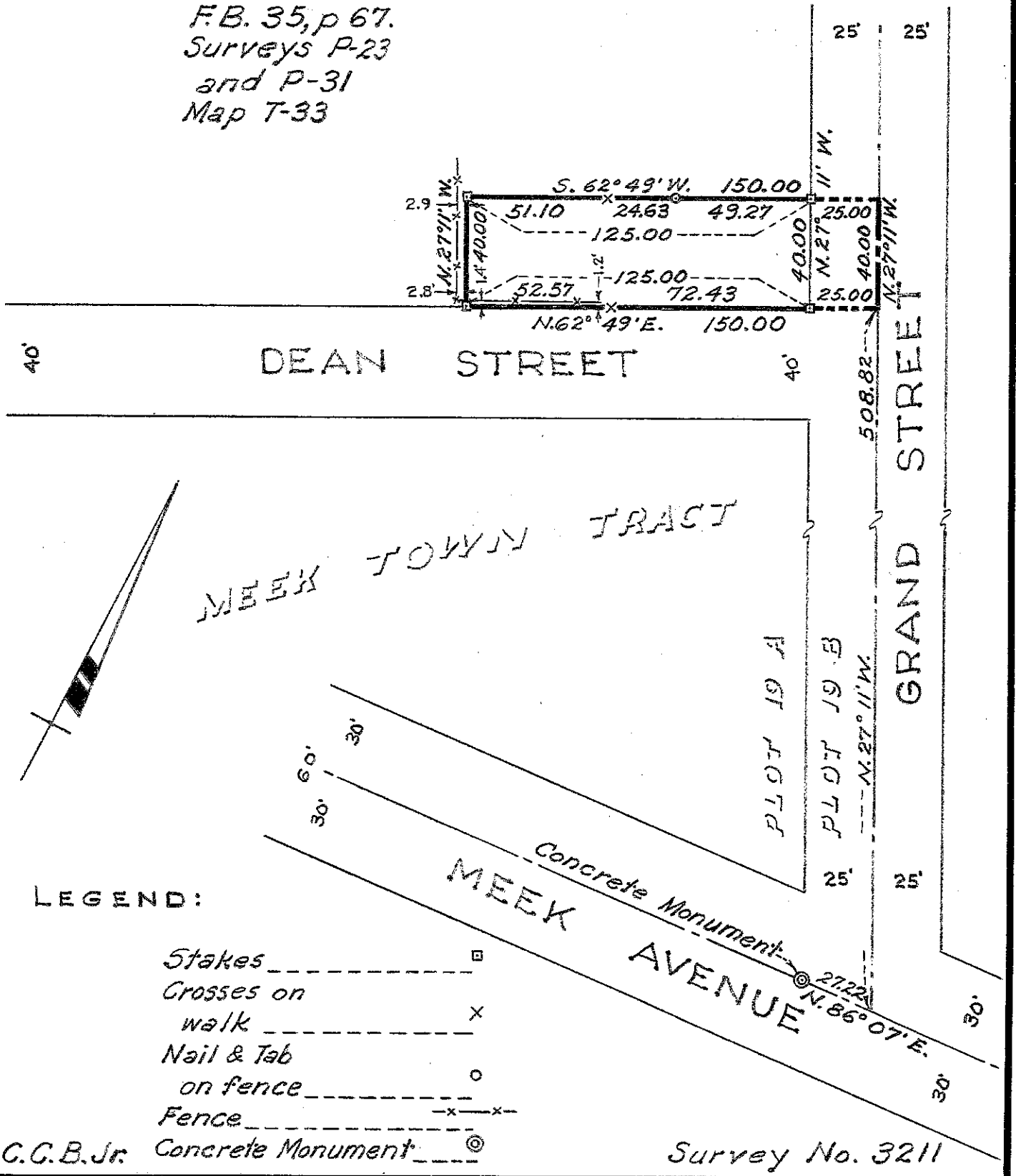
Survey for MR. TROY E. ESKRIDGE.  
 in the City of Hayward, Alameda County, California.  
 of a portion of Plots 19-A and 19-B, "MAP OF MEEK TOWN  
 TRACT", etc., filed October 18, 1905, in Book 20 of Maps,  
 at page 85, in the office of the County Recorder of  
 Alameda County.

SCALE: 1 INCH = 50 FEET  
 Surveyed, May, 1950

*John A. Mancini*  
 John A. Mancini, R.E. No. 1592  
 1279 "A" St., Hayward, California.

REFER:

F.B. 35, p 67.  
 Surveys P-23  
 and P-31  
 Map T-33



LEGEND:

- Stakes □
- Crosses on walk x
- Nail & Tab on fence o
- Fence -x-x-
- Concrete Monument ⊙

G.C.B. Jr.

Survey No. 3211