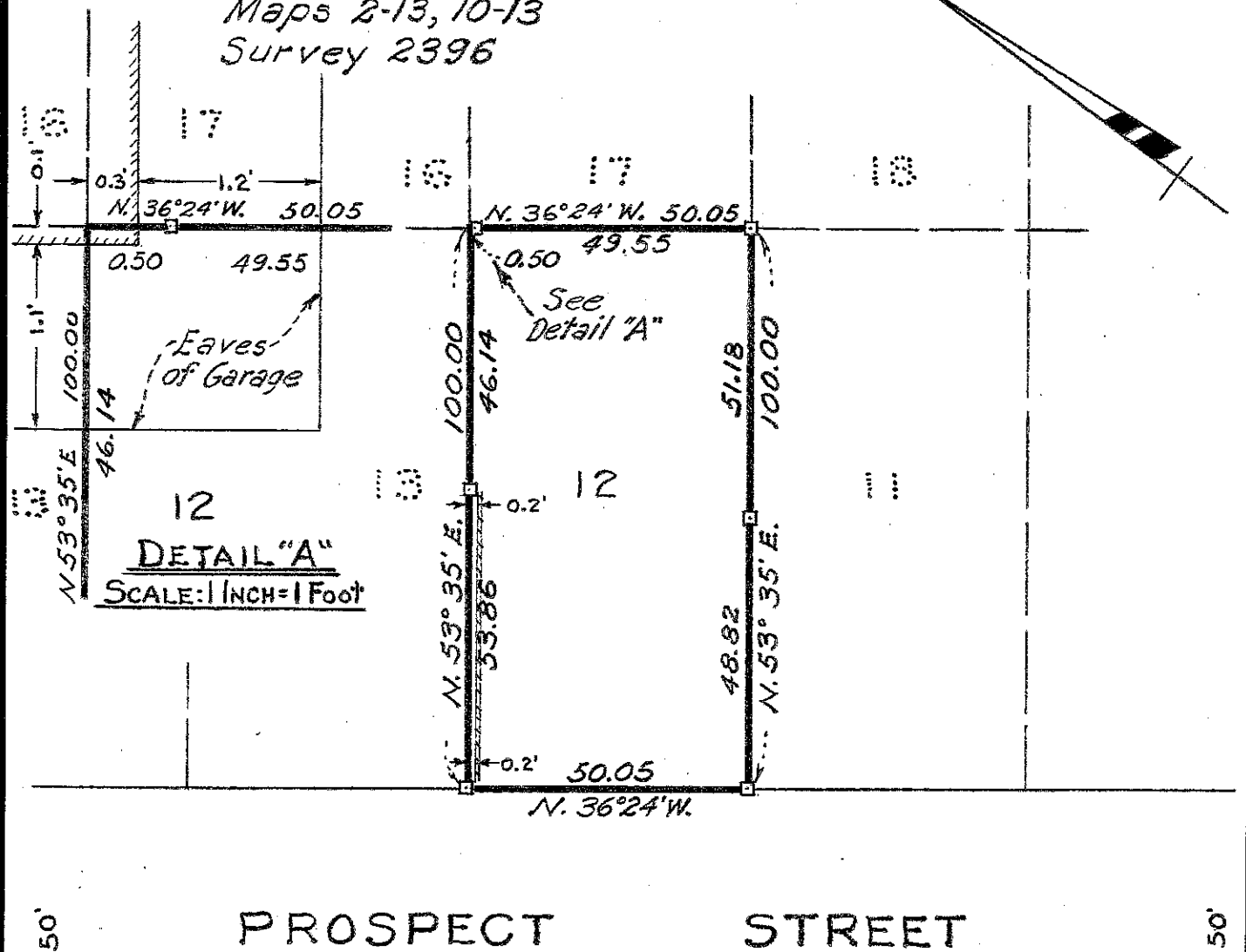


Survey for MRS. MINNIE E. SEAVER
 in the City of Hayward, Alameda County, California.
 of Lot 12, Block "C", "MAP OF THE ANSPACHER
 TRACT", etc., filed July 20, 1892 in Book 17 of
 Maps, at page 63, in the office of the County
 Recorder of Alameda County.

SCALE: 1 INCH = 30 FEET
 Surveyed, May, 1952

John A. Mancini
 John A. Mancini, R.E. No. 1592
 1279 "A" St., Hayward, California.

REFER:
 F.B. 36, p. 74
 Maps 2-13, 10-13
 Survey 2396



LEGEND:

- Stakes
- 6" Concrete Wall
- Garage and Eaves