

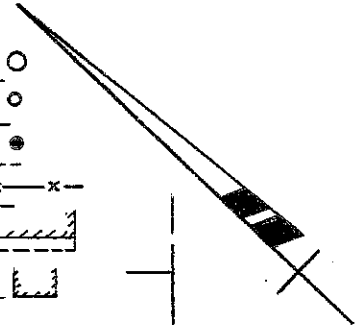
Survey for MR. HOWELL A. PLEMMONS
 in the City of Hayward, Alameda County, California.
 of Lot 14, Block 8, "MAP OF MEEK ESTATE ORCHARDS",
 etc., Map No. 1., filed December 15, 1911, in Book 26 of
 Maps, at page 60, in the office of the County Recorder
 of Alameda County.

SCALE: 1 INCH = 40 FEET
 Surveyed, March, 1952

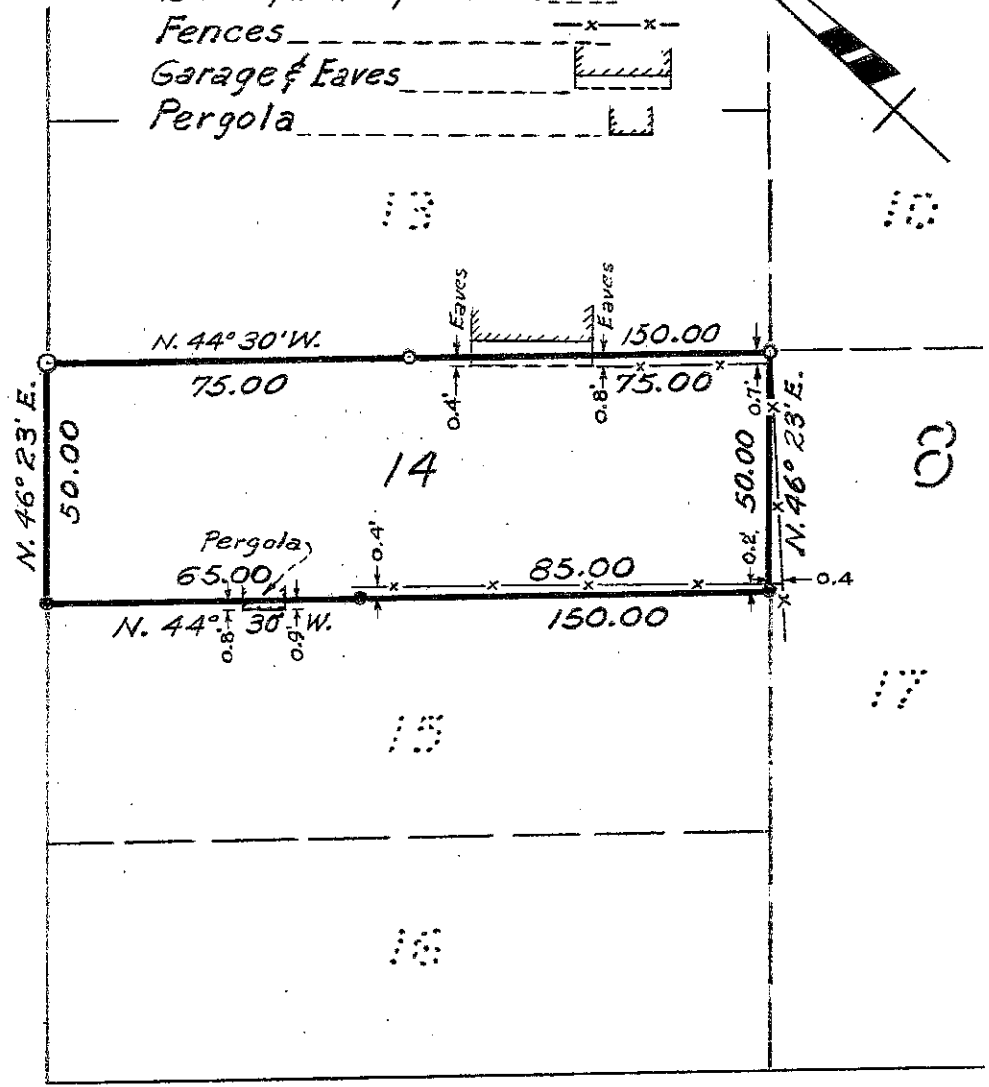
John A. Mancini, R. E. No. 1592
 1279 "A" St., Hayward, California.

REFER:
 F. B. 6, p. "B"
 Map 4-2A
 Survey 1548

- LEGEND:
- 1" Iron pipe & plug ○
 - 1/2" Iron pipe & plug ○
 - 5/8" Iron pin with punch hole ●
 - Fences -x-x-
 - Garage & Eaves
 - Pergola



SUNSET
BOULEVARD



PERALTA
STREET

60'

60'

70'

C.C.B. Jr.

Survey No. 3175