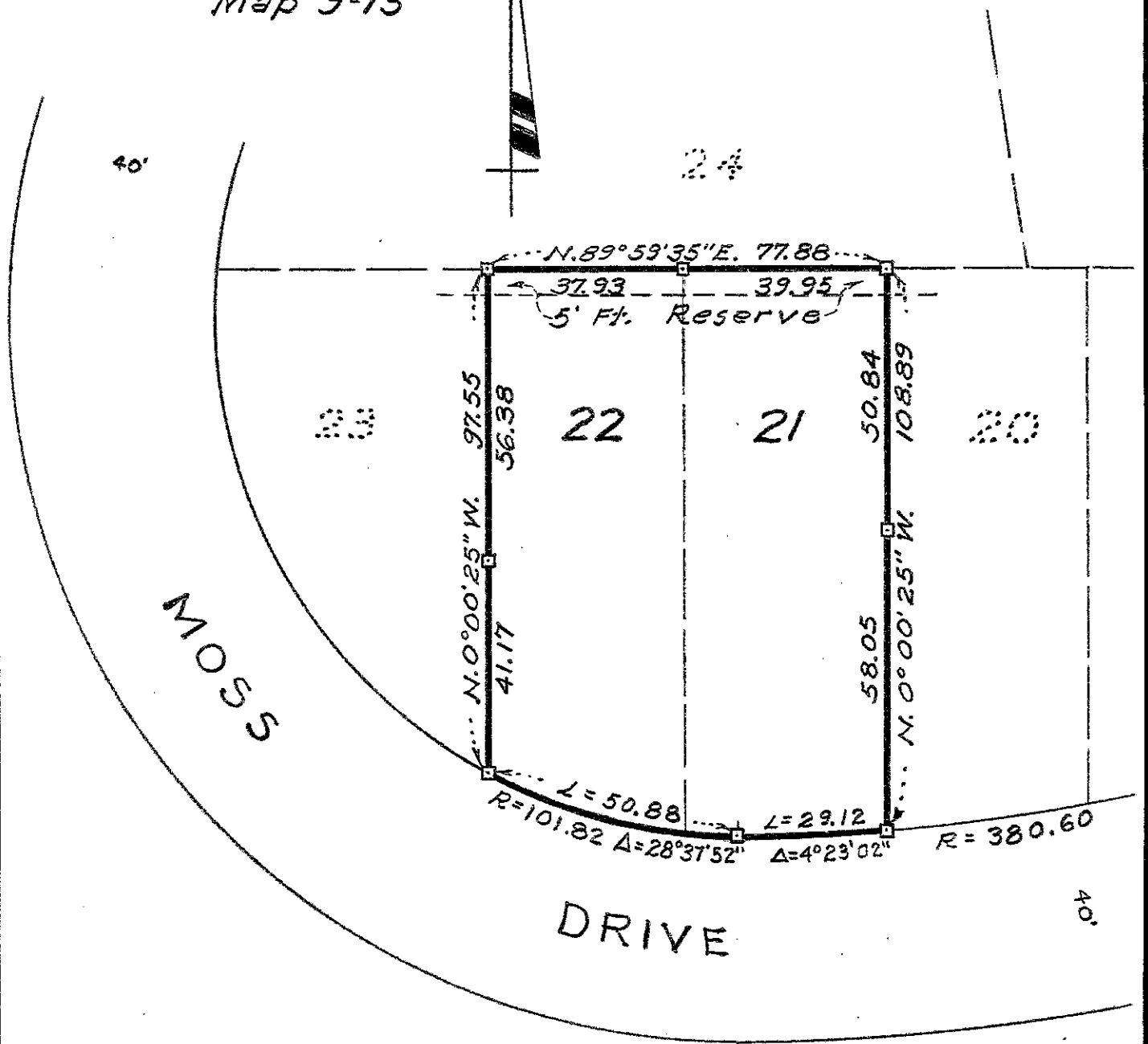


Survey for MR. H. GONZALES  
 in Eden Township, Alameda County, California.  
 of Lots 21 and 22, Block "O", "EAST OAKLAND  
 TERRACE", etc., filed December 23, 1925 in Book  
 5 of Maps, at pages 42 and 43, in the office of  
 the County Recorder of Alameda County.  
 SCALE: 1 INCH = 30 FEET  
 Surveyed, May, 1952

*John A. Mancini*  
 John A. Mancini, R.E. No. 1592  
 1279 "A" St., Hayward, California.

REFER:  
 F.B. 53, p. 2  
 Map 9-13



LEGEND:

Stakes -----