

Survey for MR. LESLIE J. EMERY  
 in Eden Township, Alameda County, California.  
 of Lots 27 and 30, in Block "B", "EAST OAKLAND  
 TERRACE", filed December 23, 1925, in Book 5 of Maps  
 at pages 42 and 43, in the office of the County Recorder  
 of Alameda County.

SCALE 1 INCH = 40 FEET

Surveyed, January 1952

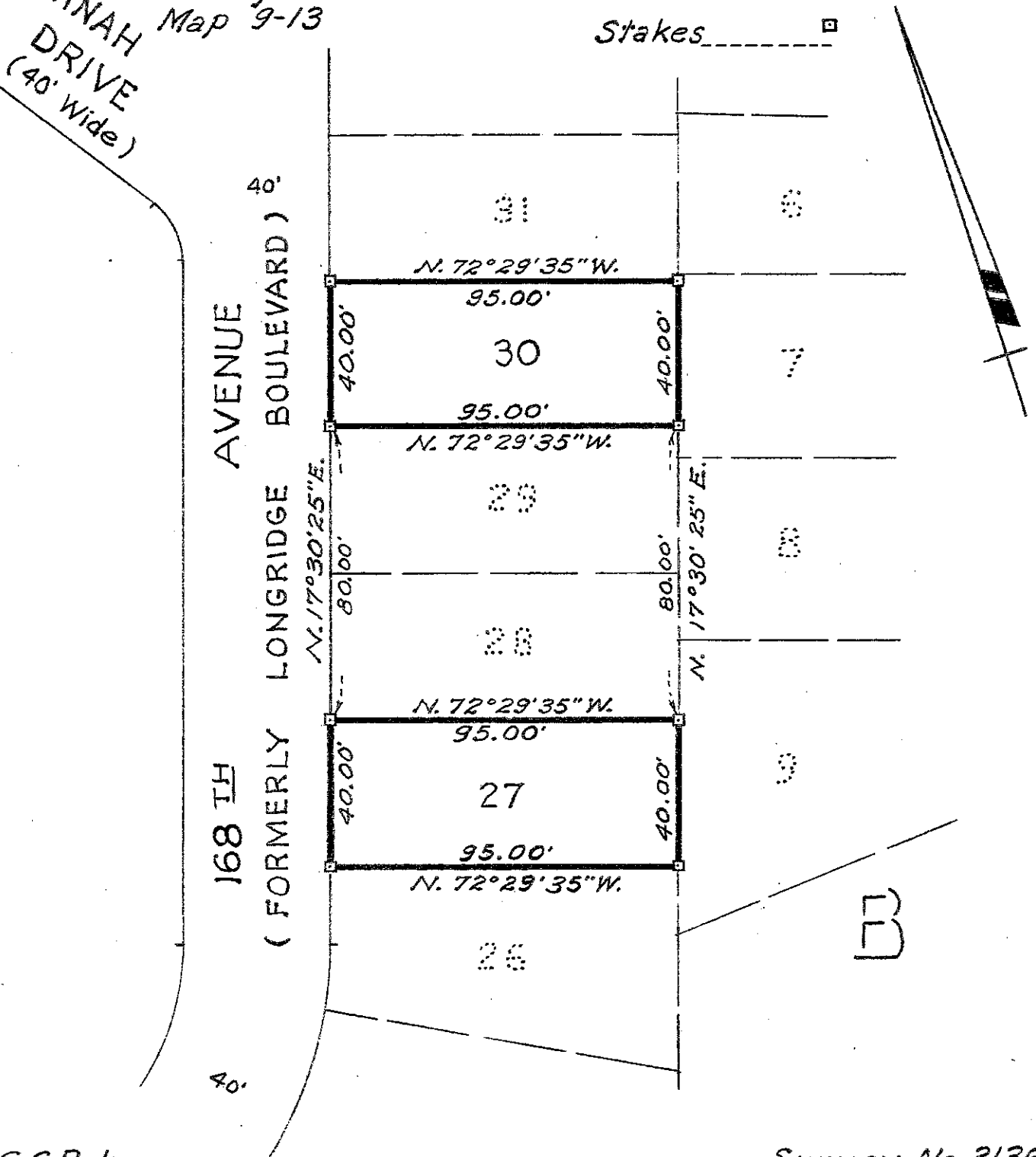
*John A. Mancini*  
 John A. Mancini, R.E. No. 1592  
 1279 "A" St., Hayward, California.

REFER:

F.B. 29, p. 71  
 Survey 2272  
 Map 9-13  
 HANNAH  
 DRIVE  
 (40' Wide)

LEGEND:

Stakes 



G.C.B. Jr.

Survey No. 3136