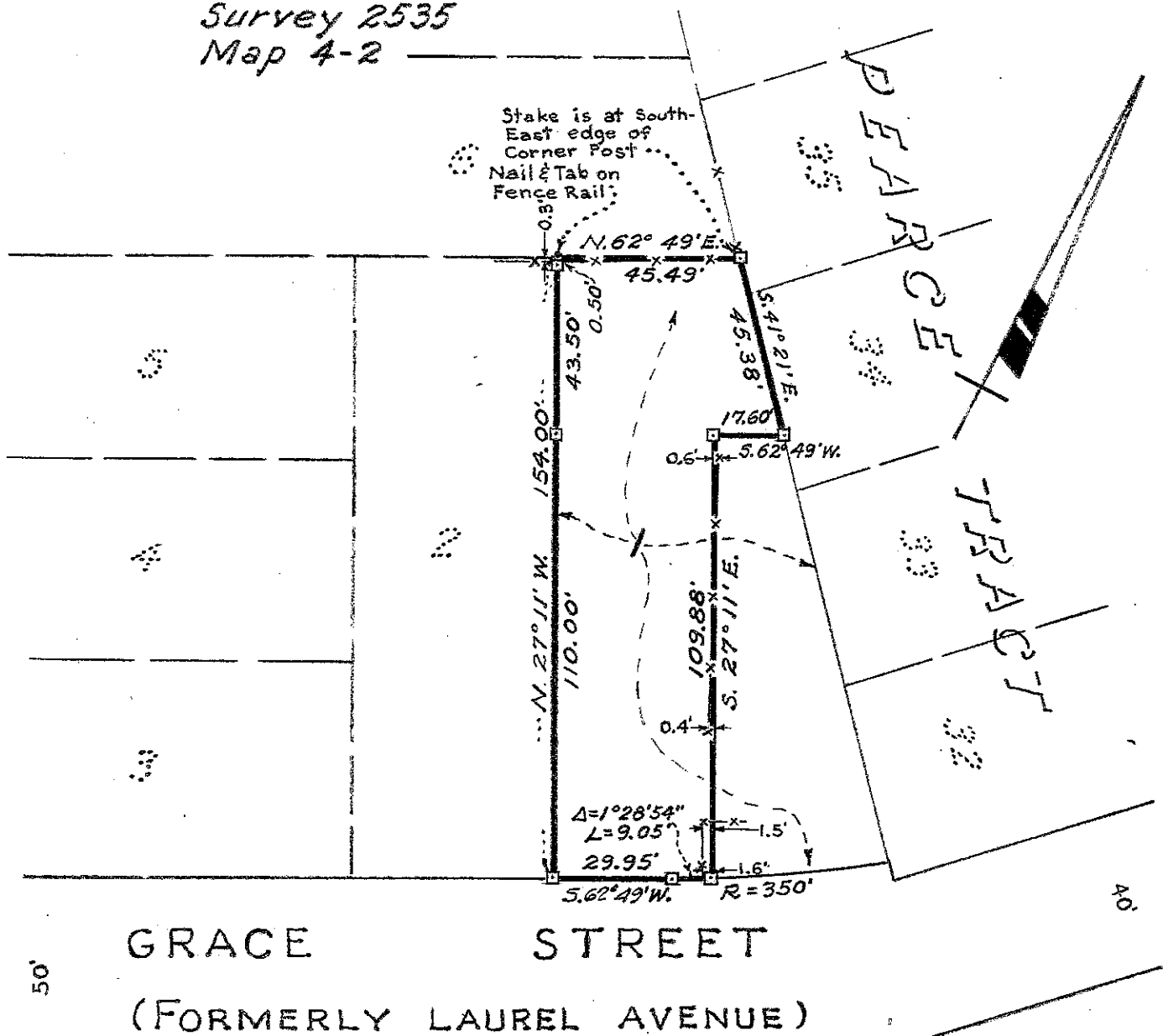


Survey for MR. GEORGE O. JACKSON
 in the City of Hayward, Alameda County, California.
 of a portion of Lot 1, Block 3, "MAP OF MEEK ESTATE
 ORCHARDS", etc., "MAP NO. 1 OF A SUBDIVISION OF
 BLOCKS 1 TO 8 INCLUSIVE", filed December 15, 1911,
 in Book 26 of Maps, at page 60, in the office of the
 County Recorder of Alameda County.

SCALE: 1 INCH = 50 FEET
 Surveyed, November, 1951

John A. Mancini
 John A. Mancini, R.E. No. 1592
 1161 "A" St., Hayward, California

REFER:
 F.B. 35, p. 62
 Survey 2535
 Map 4-2



LEGEND:

- Stakes
- Nail & Tab
- Fence