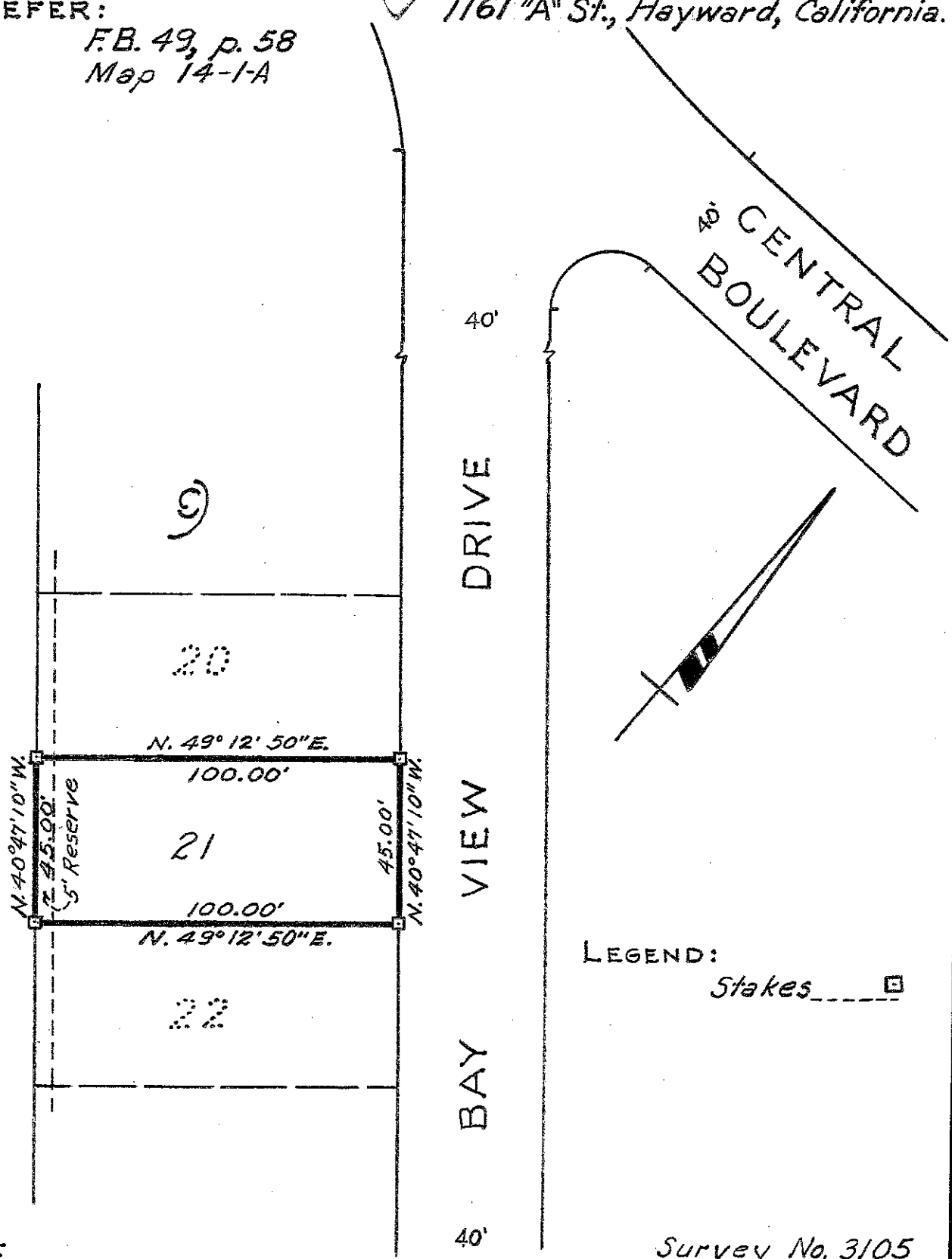


Survey for MR. RUDOLPH HEMZA
 in the City of Hayward, Alameda County, California.
 of Lot 21, Block 9, "E. 14TH ST. HOME SITES EDEN
 TOWNSHIP", etc., filed February 8, 1928 in Book 18 of
 Maps, at pages 56 and 57, in the office of the County
 Recorder of Alameda County.

SCALE: 1 INCH = 40 FEET
 Surveyed, October, 1951

REFER:
 F.B. 49, p. 58
 Map 14-1A

John A. Mancini
 John A. Mancini R.E. No. 1592
 1161 "A" St., Hayward, California.



C.C.B. Jr.

Survey No. 3105