

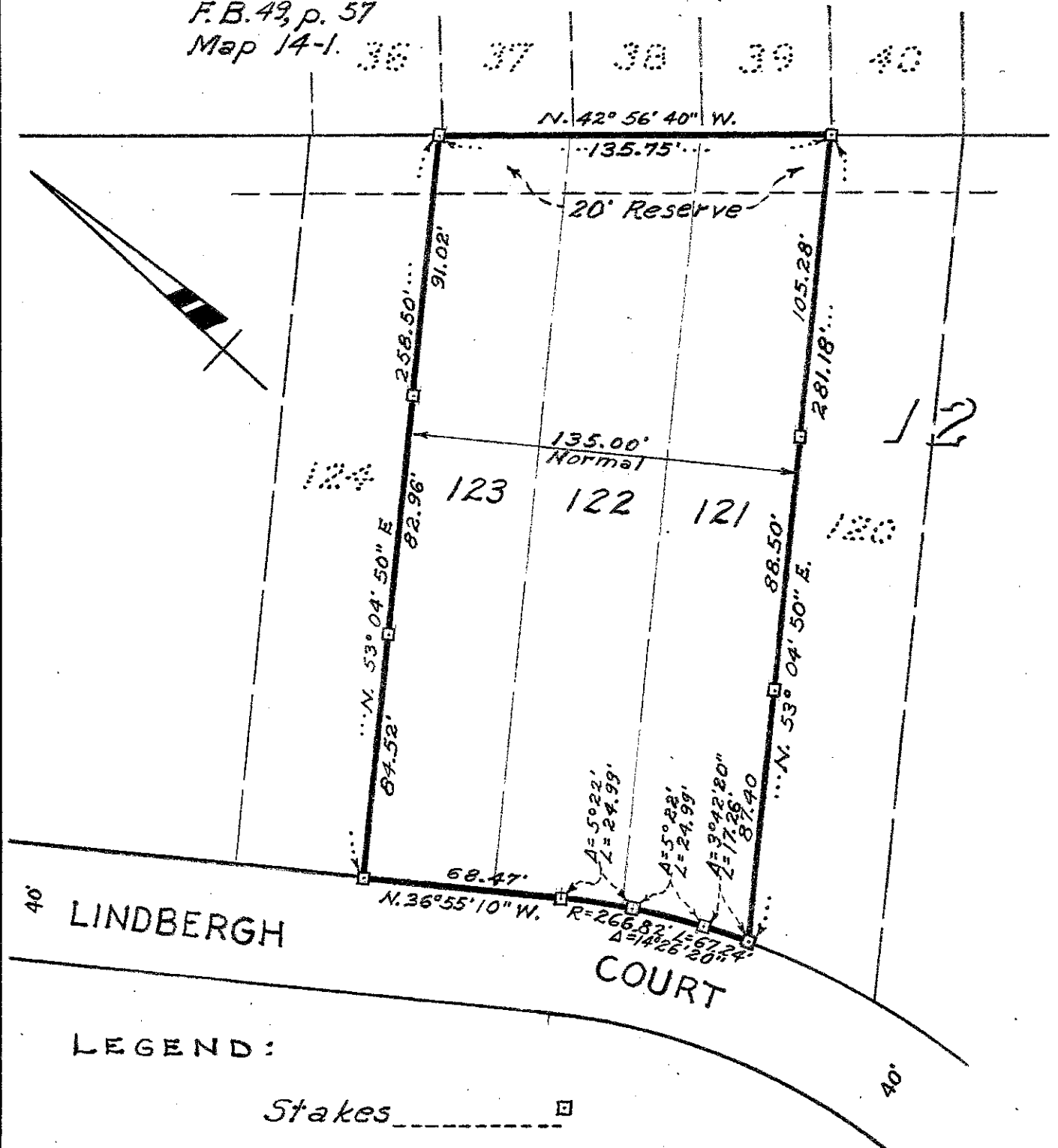
Survey for MRS. EMMA VAN HOLLEBEKE
 in the City of Hayward, Alameda County, California.
 of Lots 121, 122 and 123, Block 12, "E. 14TH ST. HOME
 SITES", etc., filed February 8, 1928 in Book 18 of
 Maps, at pages 56 and 57, in the office of the County
 Recorder of Alameda County.

SCALE: 1 INCH = 50 FEET
 Surveyed, October, 1951

John A. Mandini
 John A. Mandini, R. E. No. 1592
 1161 "A" St., Hayward, California.

REFER:

F.B. 42, p. 57
 Map 14-1. 36 37 38 39 40



LEGEND:

Stakes 

G.C.B. Jr.

Survey No. 3087