



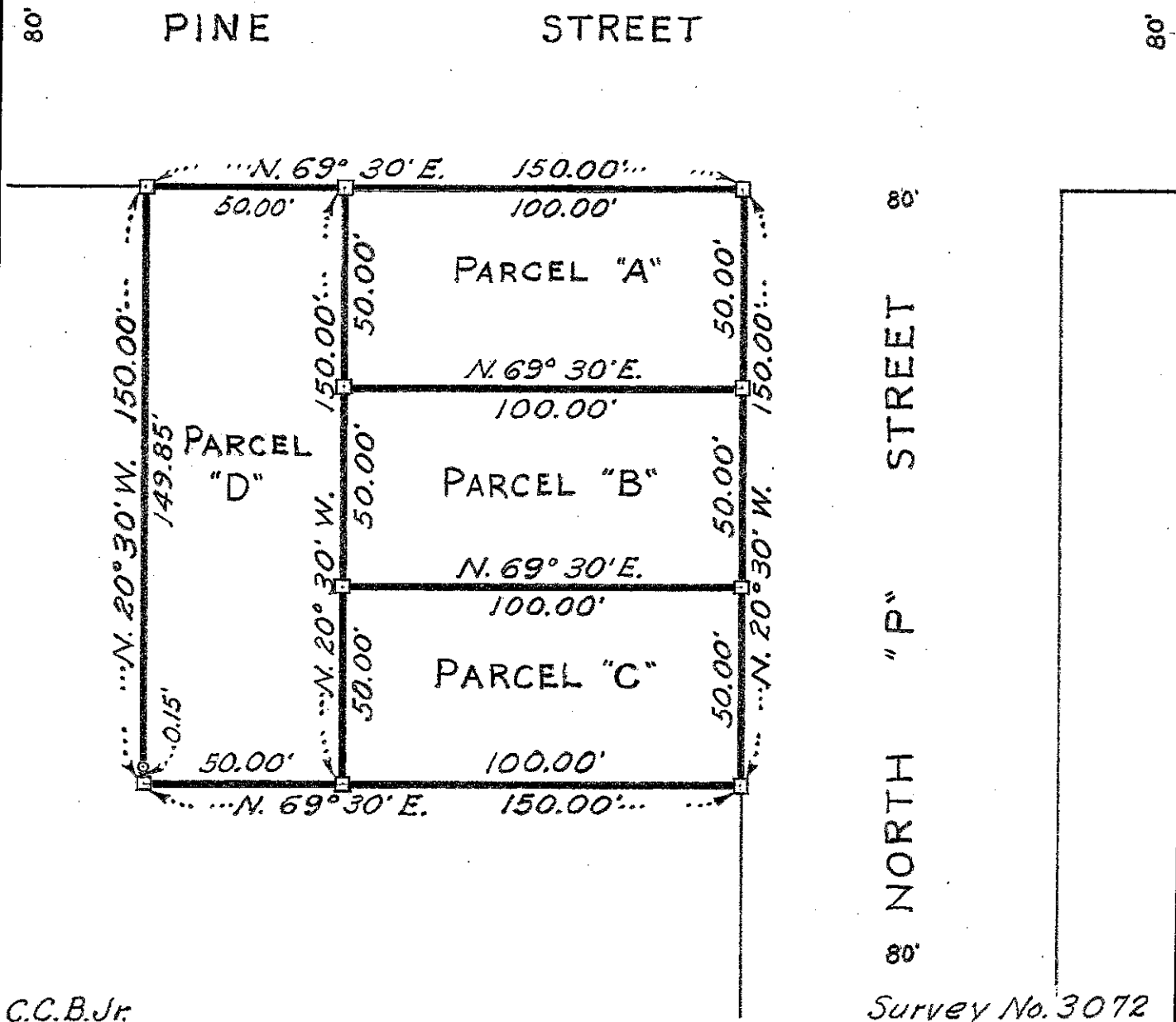
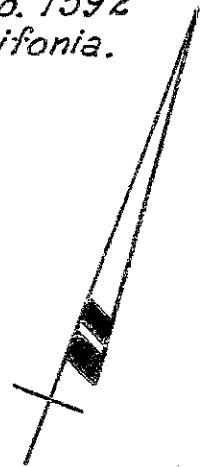
Survey for MR. STANLEY M. DAVIS  
 in the City of Livermore, Alameda County, California.  
 SCALE: 1 INCH = 40 FEET  
 Surveyed, August, 1951

John A. Mancini, R. E. No. 1592  
 1161 "A" St. Hayward, California.

REFER:  
 F.B. 27, p. 67.  
 Map Sheet 1, City  
 of Livermore

LEGEND:

Stakes   
 Pipe & Plug 



C.C.B.Jr

Survey No. 3072