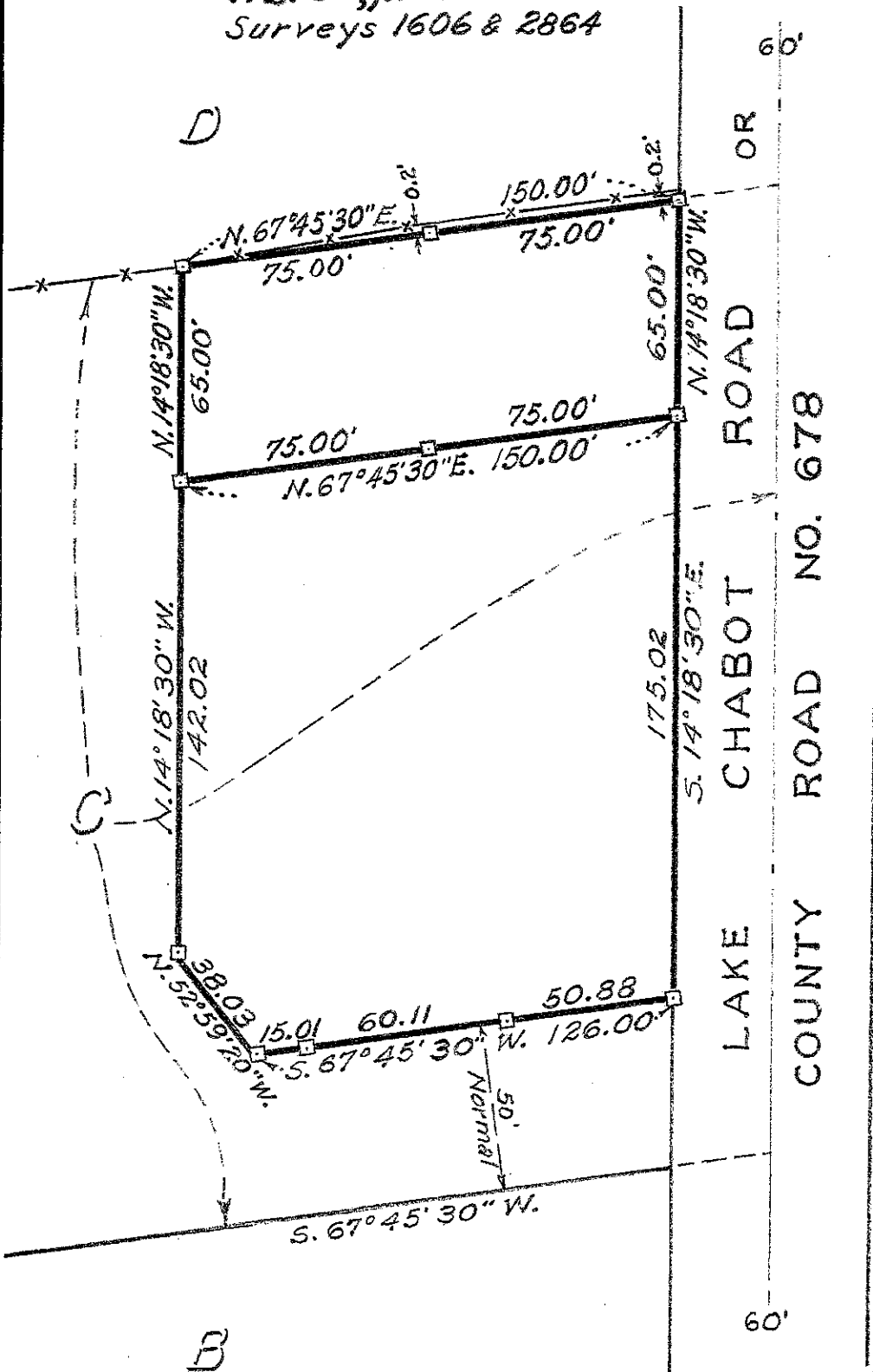


Survey for MISS. GLADYS STEWART
 in Eden Township, Alameda County, California.
 of a portion of Plot "C", "SUBDIVISION OF A. S. JONES RANCH",
 filed July 9, 1908, in Liber 24 of Maps, at page 11, in the
 office of the County Recorder of Alameda County.
 SCALE: 1 INCH = 50 FEET
 Surveyed, June, 1952

REFER:

F.B. 54, p. 12
 Surveys 1606 & 2864

John A. Mancini
 John A. Mancini, R. E. No. 1592
 1161 "A" St., Hayward, California.



LEGEND:

Stakes
 Fence

C.C.B. Jr.

Survey No. 3061-C