

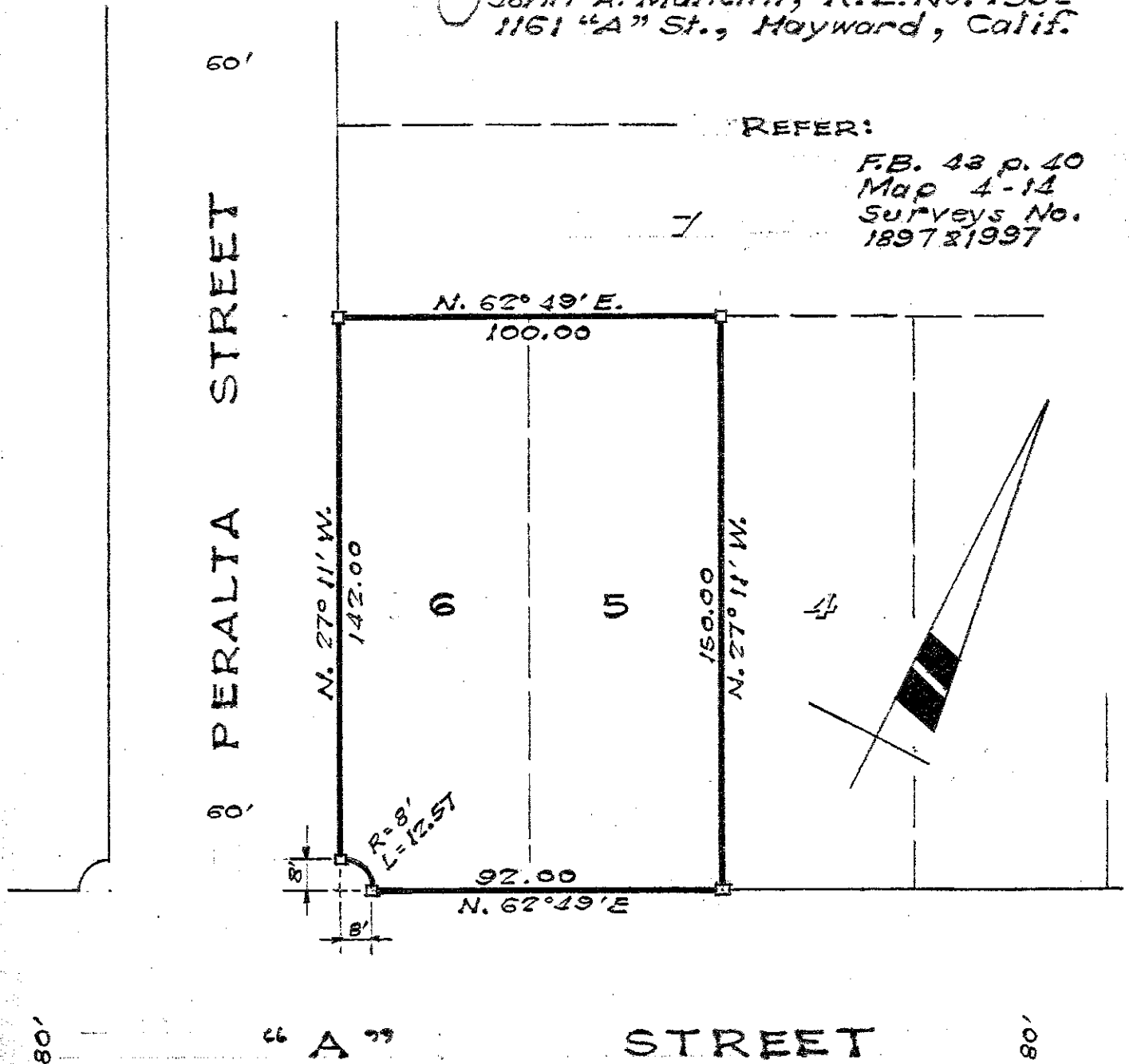
Survey for MR. JOHN C. VARNI
 in the City of Hayward, Alameda County, California,
 of Lots 5 and 6, in Block 6, "MEEK ESTATE
 ORCHARDS", etc., filed December 15, 1911 in
 Book 26 of Maps, at page 60, in the office of
 the County Recorder of Alameda County.

SCALE: 1 INCH = 40 FEET
 Surveyed, May, 1951

John A. Mancini
 John A. Mancini, R.E. No. 1592
 1161 "A" St., Hayward, Calif.

REFER:

FB. 43 p. 40
 Map 4-14
 Surveys No.
 1897 & 1997



LEGEND:

Stakes -----□

Cross in concrete ...+